

# First Unitarian Universalist Church of San Diego Campus Master Plan Summary

## Objectives:

- ☀ Adequate programmed space
- ☀ Integration of existing buildings
- ☀ Enhancement of existing amenities
- ☀ Sufficient near parking
- ☀ Environmental stewardship
- ☀ Phased improvements
- ☀ Accessibility and Safety

## Proposal:

- ☀ Bard Hall—A second floor addition of 2,000 square feet to accommodate three new meeting hall of various sizes, more functional storage and kitchen arrangements, increased restroom accommodations, an enlarged library/conference room, meeting room and a dedicated music office
- ☀ Administration Building—A second floor addition of 2,500 square feet to accommodate program coordinators and ministry with additional functional meeting and support spaces; first floor renovations redefine the building entrance administrative support area, provide conference, workshop and utility space.
- ☀ Connecting bridge/walkways—A connection between the second levels of Bard Hall and the Administration Building that would provide a more defined exterior contour and a bridge to the UCSD parking structure access road.
- ☀ Patio—Retain current function with a new disabilities accessible ramp, a new Meeting House portico, and integration with a new memorial wall/garden
- ☀ Parking Structure—A free standing structure located in the existing parking lot, esthetically integrated with the campus, and financed through revenue generated from commercial parking.

## Campus Site Layout and Master Plan



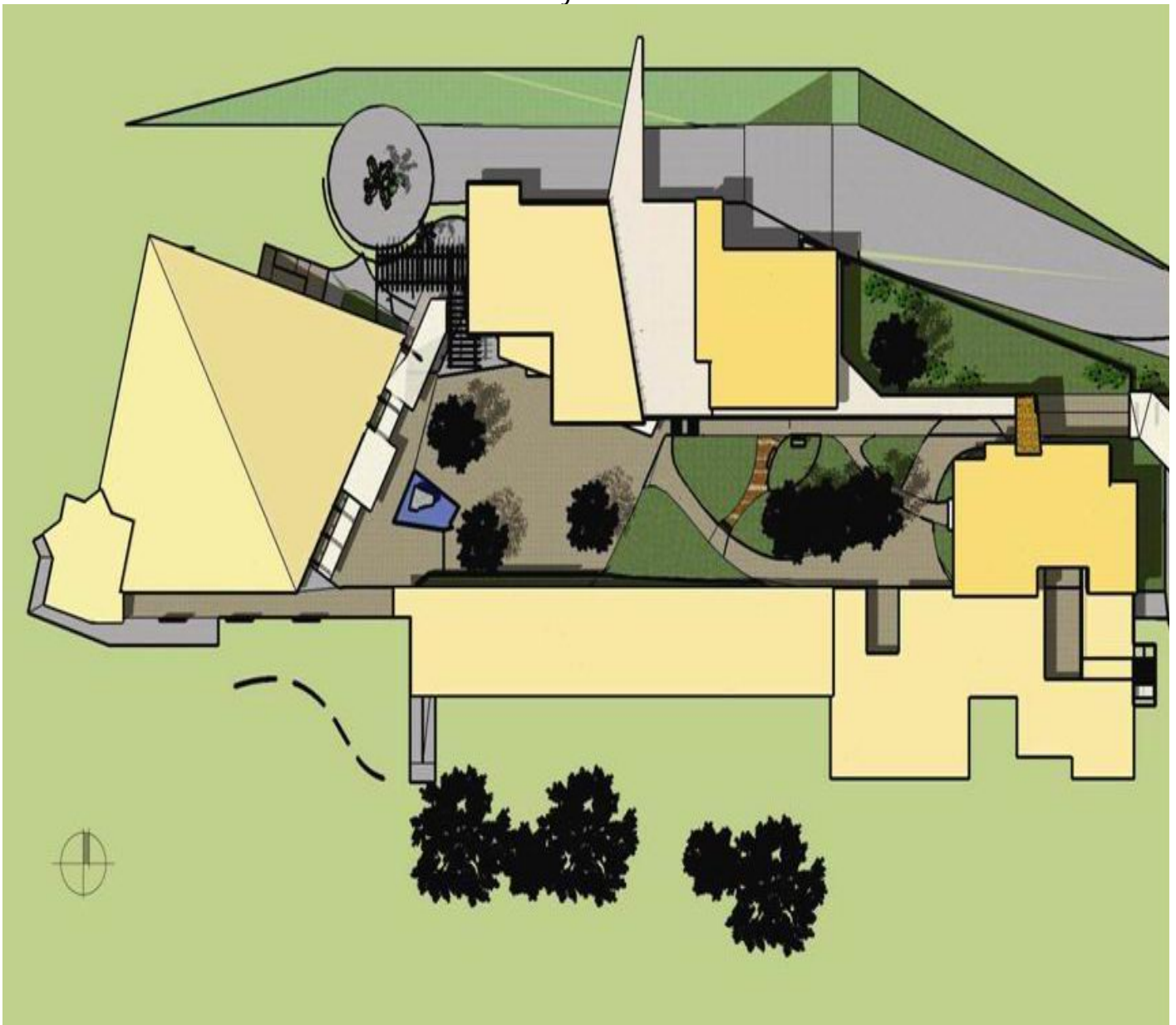
### Key

- B—Bard Hall with 2<sup>nd</sup> Floor Addition
- A—Administration Building with 2<sup>nd</sup> Floor Addition
- R—Religious Education Building Renovations
- P—Preschool (playground renovation)
- M—Meeting House (minor improvements)
- G—Parking Garage

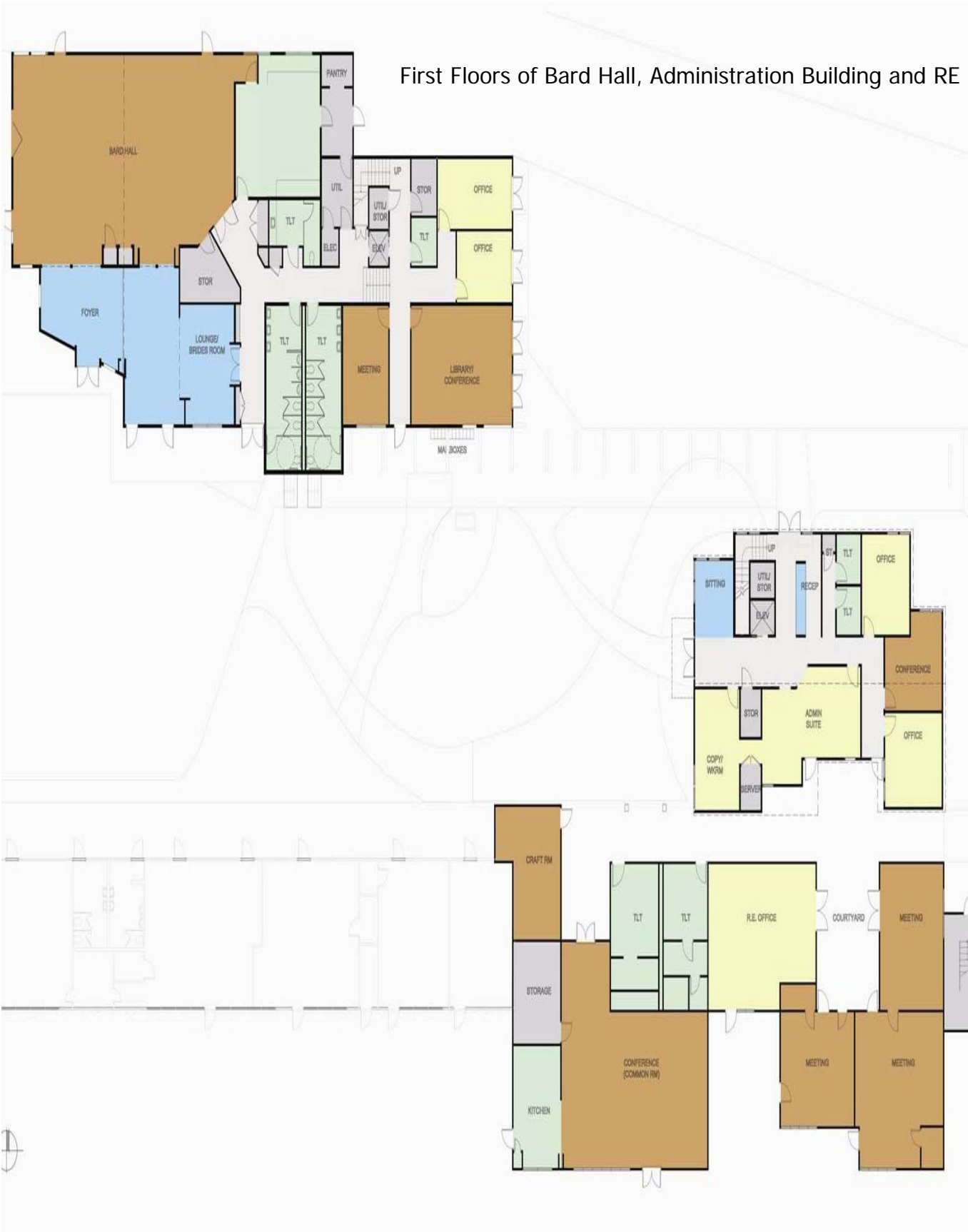
### Phasing

1. Bard Hall and Courtyard
2. Administration and Religious Education
3. Parking Structure

Site Layout--West



First Floors of Bard Hall, Administration Building and RE



# Second Floor of Bard Hall and Administration





View from Arbor St with parking structure



View from Arbor Street without parking structure



Patio view East toward Administration Building



View of Bard Hall from Meeting House entrance

Architects:

Alison Whitelaw

Todd Lukas

Platt/Whitelaw Architects, Inc.

San Diego, California

<u>Bard Hall</u>		
<u>Current Use</u>	<u>Area sf</u>	<u>Proposed</u>
Bard Hall	1910	1910
Kitchen	498	498
Lounge	685	685
Utility	317	140
Men's Toilet	136	240
Women's Toilet	195	240
Total Storage	146	170
Foyer		290
Meeting Room	402	260
Office	222	180
Office	229	160
Library	360	480
File/Storage	225	75
Toilet		50
<u>2nd Floor</u>		
Conference		500
Meeting		350
Meeting		300
Lounge/Wkroom		140
Storage		135
Toilet		120
Net Change		1763 sf
Subtotal Net Square Feet		6923
Efficiency Factor = 80%		
<b>Proposed Gross Area</b>		<b>8385</b>

<u>Administration Building</u>		
<u>Current Use</u>	<u>Area sf</u>	<u>Proposed A</u>
Reception/Office	120	100
Sitting Areas		120
Office (Admin Dir)	165	230
Office (Minister)	208	230
Office (Minister)	213	213
Office (Intern Minister)		145
Office (Coord)	144	200
Office (Coord)	229	220
Office (Coord)	153	
Office (Book)	153	213
Office (Admin)	78	360
Conference		200
Conference		165
Workroom	314	220
Workroom		80
Total Storage/ Util	51	169
Toilet (Private)	50	200
Net Change		1500 sf
Subtotal Net Square Feet		3065
Efficiency Factor = 65%		
<b>Total Gross Area</b>		<b>5075</b>

<u>Religious Education</u>			
<u>Current Use</u>	<u>Area sf</u>	<u>Programmed Use</u>	<u>Proposed Area sf</u>
(Areas include integral storage/closets)			
Craft Room	434	Craft Room	320
Senior High Room	554	Grp Room	554
Junior High Room	350	Grp Room	400
Group Room	303	Grp Room	384
Group Room	313		
M Toilet	245	M Toilet	245
W Toilet	245	W Toilet	245
Common Room	951	Common Room	1050
Storage	127	Storage	165
Kitchen	240	Kitchen	240
R.E. Office	497	R.E. Office	620
		Outdoor Courtyard	75
Net Change	00		
Subtotal Net Square Feet			4298
Efficiency Factor = 90%			
<b>Total Gross Area</b>			<b>4775</b>